



SEE THINGS DIFFERENTLY

AND CHANGE YOUR LENS ON LIFE



You have a choice when it comes to the type of intraocular lens you choose for cataract surgery. The right lens can treat your cataracts and astigmatism in one procedure.

**See what's possible with a
Clareon® Toric Lens.**

Alcon

KNOW YOUR OPTIONS

PUT YOUR FUTURE IN FOCUS

With the **Clareon® Collection of Toric Lenses**, you can gain exceptional clarity and correct astigmatism at the same time.¹

NEARLY 40%
of people with cataracts also
require astigmatism correction²

With astigmatism, you may experience symptoms such as:



Distorted or blurry vision



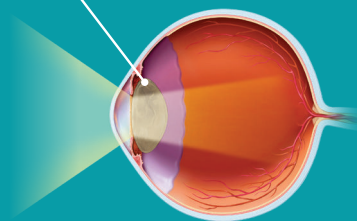
Eye discomfort



Headaches

EYE WITH CATARACT

CATARACT



As protein builds up over time, your eye's natural lens becomes cloudy and blocks light from passing through.³

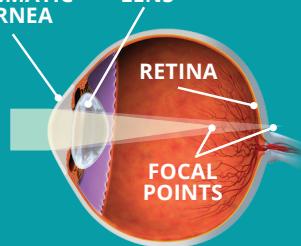
EYE WITH ASTIGMATISM

ASTIGMATIC CORNEA

LENS

RETINA

FOCAL POINTS



The surface of the cornea has an uneven curvature, shaped more like a football than a basketball, causing vision to become distorted.

START YOUR JOURNEY WITHOUT CATARACTS OR ASTIGMATISM

During cataract surgery, your surgeon replaces your eye's natural lens with a new, artificial lens that restores clarity of vision.

1. CATARACT REMOVAL

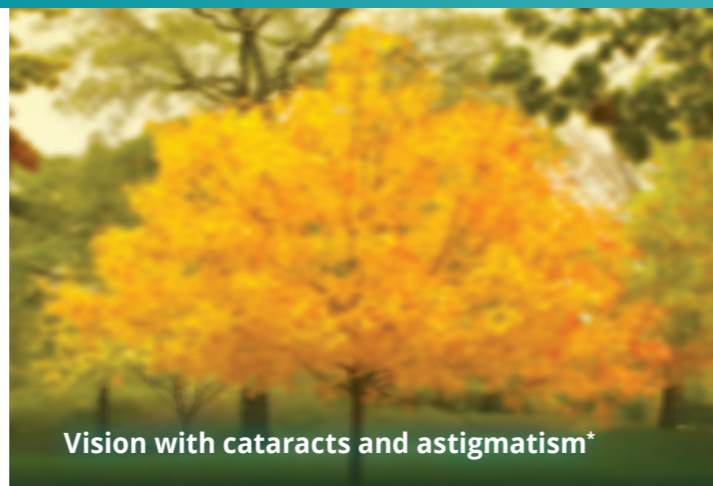
Through a tiny incision, the surgeon removes your clouded lens.

2. LENS INSERTION

The surgeon replaces your original lens with a new **Clareon® Toric Lens**.

3. VISION RENEWED

The **Clareon® Toric Lens** frees you from cataracts and astigmatism.



Vision with cataracts and astigmatism*



Vision with astigmatism alone*



Vision with a Clareon® Toric Lens*

*Simulated images. Although Clareon® Toric visual result is typical, individual results may vary.

TOPICS TO DISCUSS WITH YOUR DOCTOR

Q. Is cataract surgery safe?

A. All surgeries have risks; however, cataract surgery is one of the safest and most common surgical procedures performed.⁴

Q. How long does does cataract surgery take?

A. The procedure takes 10-15 minutes, plus 1-2 hours for recovery.⁵ It's an exciting opportunity to renew your vision and see life clearly again.

Q. What kind of vision will I have after cataract surgery?

A. Depending on the IOL you and your surgeon select, cataract surgery may also help you become less dependent on glasses, or even spectacle-free.^{1,6-8}



FIND OUT MORE AT
[MYCATARACTS.COM](https://www.mycataracts.com)

Q. Which astigmatism-correcting cataract replacement lens is right for me?

A. The replacement lens you choose can have a big impact on what you can see and do after surgery. Talk to your surgeon; they can recommend the replacement lens that best fits your specific vision needs.

ASK YOUR DOCTOR WHICH
TORIC LENS IS RIGHT FOR YOU.

 Clareon. PanOptix. Toric
Trifocal IOL

 Clareon. Vivity. Toric
Extended Vision IOL

 Clareon. Toric
IOL



IMPORTANT PRODUCT INFORMATION - CLAREON® FAMILY OF IOLS

CAUTION: Restricted by law to sale by or on the order of a physician.

DESCRIPTION: The **Clareon® Family of Lenses** are artificial lenses implanted in the eye of adult patients following cataract surgery. The **Clareon® Aspheric Hydrophobic Acrylic IOLs** are designed to allow for clear distance vision. However, you will likely still need glasses for reading and for distance vision particularly if you already have astigmatism. The **Clareon® PanOptix® Trifocal Hydrophobic IOL** is a type of multifocal lens (sometimes called “presbyopia-correcting IOL”) designed to allow for clear distance, intermediate, and near vision with the potential to be more independent of the need to use glasses for daily tasks. The **Clareon® Vivivity® Extended Vision Hydrophobic Posterior Chamber IOL** provides clear distance vision, and better intermediate and some near vision compared to a monofocal IOL. The **Clareon® Aspheric Toric, Clareon® PanOptix® Toric, and Clareon® Vivivity® Toric IOLs** are also designed to correct pre-existing corneal astigmatism, which is the inability of the eye to focus clearly at any distance because of difference curvatures on the cornea, and provide distance vision.

WARNINGS / PRECAUTIONS: You may experience and need to contact your eye doctor immediately if you have any of the following symptoms after cataract surgery: itching, redness, watering of your eye, sensitivity to light. The safety and effectiveness of these IOLs have not been established in patients with eye conditions, such as an increase in eye pressure (glaucoma) or complications of diabetes in the eye (diabetic retinopathy). As with any surgical procedure, there are risks involved. These risks may include but are not limited to infection, damage to the lining of the cornea, the retinal layer which lines the inside back wall of your eye may become separated from the tissue next to it (retinal detachment), inflammation or swelling inside or outside the eye, damage to the iris (the colored diaphragm around the pupil), or an increase in eye pressure that cannot be controlled by medicine and secondary surgical procedure. There is a possibility that the IOL may be placed incorrectly or could move within the eye. This may result in less improvement or a reduction in vision, or it may cause visual symptoms. The **Clareon® Aspheric Toric, Clareon® PanOptix® Toric, and Clareon® Vivivity® Toric IOLs** correct astigmatism only when placed in the correct position in the eye. There is a possibility that these Toric IOLs could be placed incorrectly or could move within the eye. This may result in less improvement or a reduction in vision because your astigmatism has not been fully corrected, or it may cause visual symptoms. With the **Clareon® PanOptix® and Clareon® Vivivity® IOLs**, there may be a loss of sharpness of your vision that may become worse in dim light or in foggy conditions. There is also a possibility that you may have some visual effects such as rings or circles (halos) around lights at night. You may also have trouble seeing street signs due to bright lights or glare from oncoming headlights.

ATTENTION: As with any surgical procedure, there are risks involved. Prior to surgery, ask your eye doctor to provide you with the Patient Information Brochure for the lens to be implanted. This Brochure which will inform you of the risks and benefits associated with the IOL. Discuss any questions about possible risks and benefits associated with your eye doctor.

REFERENCES: 1. Clareon® Toric Directions for Use. 2. Núñez MX, Henriquez MA, Escaf LJ, et al. Consensus on the management of astigmatism in cataract surgery. Clin Ophthalmol. 2019;13:311-324. Published 2019 Feb 11. 3. Cataracts. National Eye Institute web page. <https://www.nei.nih.gov/learn-about-eye-health/eye-conditions-and-diseases/cataracts>. Accessed April 13, 2023. 4. Davis G. The Evolution of Cataract Surgery. Mo Med. 2016;113(1):58-62. 5. Cataract Surgery. Mayo Clinic web page. <https://www.mayoclinic.org/tests-procedures/cataract-surgery/about/pac-20384765>. Accessed April 13, 2023. 6. Clareon® Vivivity® Extended Vision Hydrophobic IOL (CNWETO) Directions for Use – USA. 7. Clareon® PanOptix® Trifocal Hydrophobic Acrylic IOL Model CNWTT0 2021 Directions for Use. 8. Zhu D, Ren S, Mills K, Hull J, Dhariwal M. Rate of Complete Spectacle Independence with a Trifocal Intraocular Lens: A Systematic Literature Review and Meta-Analysis. Ophthalmol Ther. 2023;12(2):1157-1171.



FIND OUT MORE AT
[MYCATARACTS.COM](https://www.mycataracts.com)